

# HISTORIC PRIVATE HOME OR PREMIER BED AND BREAKFAST



## THE FELT MANSION IN GALENA, ILLINOIS

**\$621,500**



Built in 1850 by Lucius Felt, The Felt Manor overlooks the Galena valley and surrounding countryside. Originally built as a Gothic Revival style home, the house was extensively renovated after the Civil War in the Second Empire style with third floor and Mansard roof. The large home and lot is one of the premier properties in Galena. The brick house features high ceilings, ornate woodwork, large

rooms, bedrooms with private baths. The house has been serving as the Felt Manor Guest House since 1981, a full-service bed and breakfast. The business has been thoughtfully managed to maintain the historic integrity, the interior design is as it was in 1874. The property is on seven levels with terraces and and limestone walls, staircases, mature trees and perennials.



## FELT MANOR VICTORIAN MANSION

As you enter the center hallway, notice the ornate woodwork, 10 foot ceilings, walnut built-ins, huge windows and hardwood floors. The first floor has 4 large parlors with one serving as the inn's dining room. The rooms feature original marble fireplaces and bay windows. The original 1874 faux finish on the doors and windows represent the art at its height. Notice the functional sliding panel doors between the main parlor and library.

The second floor, accessible from two staircases, features 5 bedrooms and 4 baths, and a large walk-in linen closet. The third floor has two more bedrooms (all with great views) and a great room originally the ballroom. The third floor also has 10 foot ceilings, original indoor shutters and central air conditioning.

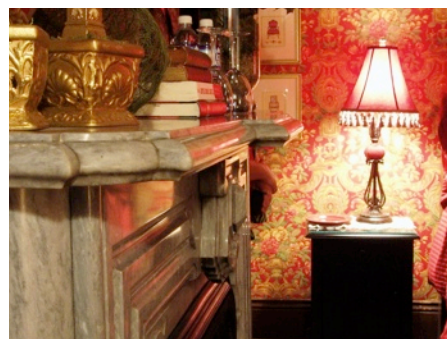
The ground level walks out on two sides and holds the original formal dining room, redone in knotty pine to be a billiards or family room. The rest of the ground floor has an office, and four utility rooms with newer boiler, water heaters, laundry and storage.

**At left:** Perched high on the hill, the Felt Manor front porch has fabulous views overlooking Galena.



### ORNATE LIBRARY

Built-in walnut Cabinets and mirror date to 1874. The bay windows, three in the house, all have original shutters with shutter wells.



### SEVEN MARBLE FIREPLACES

Pictured above is the original 1850 grey marble fireplace in the Katherine room. The house features seven black, grey and sandstone fireplaces, of which four are fully functioning.



### LARGE PARLORS

The main parlor features high 10 foot ceilings, fireplace, and double sliding doors from the library. The entire home has hand painted walnut faux finish doors and mouldings that are original to 1874.



## A BIT OF HISTORY

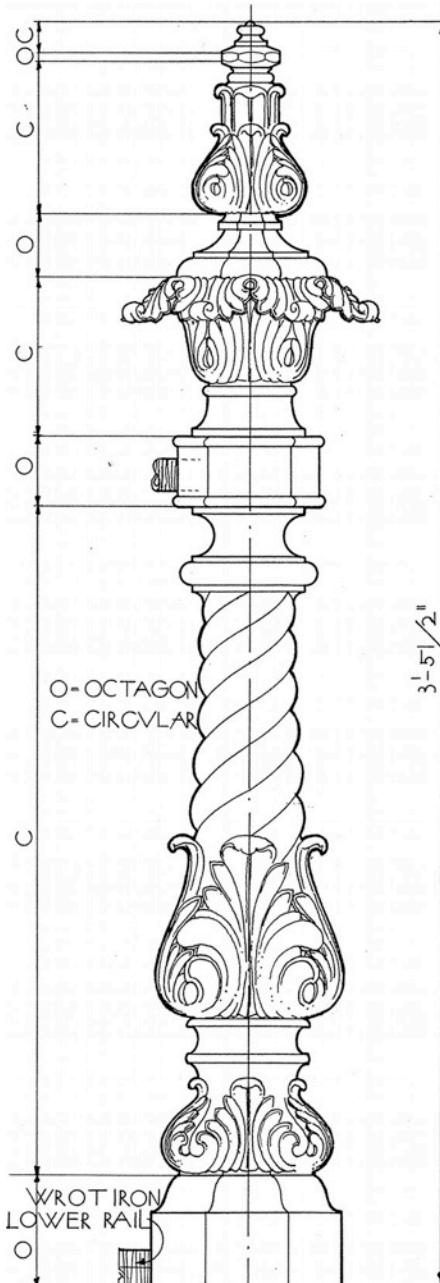
The Lucius S Felt Manor was home to the Felt family from 1850 to 1908. Lucius Felt, a dry-goods merchant, shipped wholesale up and down the Mississippi River and opened a retail store on Main Street. Founded in 1828 Galena was a thriving lead mining town that became the hub for importing and manufacturing in the Northwest Territory. During its peak, over one thousand riverboats

arrived in Galena each week. When the railroads opened the West and the Galena river became silted-in preventing navigation, the activity came to a halt, and people moved west or to the new hubs of commerce and opportunity. One hundred years later, sleepy Galena was declared a historic district as it contained a great collection of preserved 19th century homes. This premier property is a once-in-a-lifetime opportunity.

### FELT MANOR, 125 S PROSPECT ST, GALENA, IL

#### 7 BEDROOMS, 5 BATHS, 20 ROOMS

	LVL	SIZE
MAIN PARLOR, Fireplace,	1	23X14
LIBRARY, Fireplace, Ornate Built-in book cabinetry, bay window	1	16x15
DINING ROOM, fireplace, built-in secretary	1	24x15
PARLOR, Fireplace, built-in glass wood cabinet, bay window	1	15x15
KITCHEN, all appliances Included.	1	15x9
WALK-IN LINEN CLOSET	2	14x7
GUEST ROOM/BEDROOM w private 3/4 Bath, marble sink	2	14x18
GUEST ROOM/BEDROOM w private 3/4 Bath, marble sink	2	14x16
GUEST ROOM/BEDROOM w private 3/4 Bath, marble sink, fireplace	2	16x17
GUEST ROOM/BEDROOM, marble sink	2	16x11
GUEST ROOM/BEDROOM, marble sink	2	15x9
BEDROOM	3	14x15
BEDROOM	3	14x15
BALLROOM, 10 foot ceiling, detailed crown mouldings.	3	32x14
BILLIARDS/FAMILY ROOM, Marble Fireplace, bay window	G	16x18
UTILITY ROOM, newer boiler, four storage rooms	G	
LAUNDRY ROOM, Washer, Dryer, plumbed for additional units	G	12x18

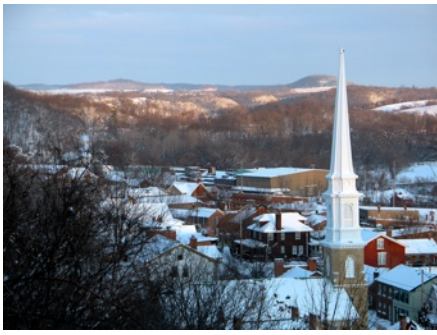


**At Left:** The exterior Felt Staircase, known as “Felt’s Folly,” has been surveyed during the Historic American Building Survey in 1933. This work contains detailed measurements, drawings of the wrought iron, cast iron and limestone stairs that front the historic building and grounds. These detailed diagrams are included in TIFF format.

## GALENA ONE REAL ESTATE

Bill Fawell

630-774-7200 or 815-777-9093



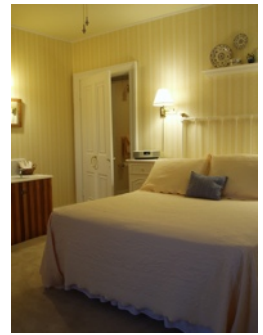
Winter view from the front porch



Quiet porch in shaded back



Original Marble Sinks



Inviting Guest Rooms

ADDITIONAL FEATURES
<b>LICENSED OPERATING 5 ROOM BED AND BREAKFAST INN</b>
Includes Guest History, Felt Family Memoirs, Historic photos, documentation of mechanical systems.
All Appliances including 2 Washers, 2 Dryers, 2 Freezers, 2 Refrigerators, Dishwasher and 7 window air conditioners
Central Fire and Security System, Smoke & Motion detection, programming tools
Digital assets include <a href="http://www.feltmanor.com">www.feltmanor.com</a> domain name and building survey
Linens, towels, and guest room supplies, all business equipment/inventory
Off street parking on private driveway.
Fire and life safety equipment including emergency lighting, extinguishers, program controller
Guest dining room tables for 10 , linen, glassware, barware, and two sets of china.
Guest room furnishings, artwork (very few exclusions for sentimental items)
Many extras including historic elements and replacement parts

SPECIFICATION	DESCRIPTION
Construction	Brick
Water	City
Sewer	City
Lot (ft)	100x270
Taxes	\$12,700
School Dist	Galena
Heating	Gas Low pressure Steam, +
Hot Water	Dual 75 Gal - Gas
A/C	3rd Floor CAC
Total Living Area	6110 sq ft
Garage	Detached Carriage House
Zoned	Residential with Special Use Permit



View from Grant Park. Felt Manor at top center



Library Built-ins with original 1870 fireplace and mirror

**GALENA ONE REAL ESTATE Contact Bill Fawell 630-774-7200 or 815-777-9093**